

# Destination Unknown?

Travers McLeod

Executive Director, Brotherhood of St. Laurence



Brotherhood of St Laurence  
Working for an Australia free of poverty

**Let's make  
change  
that lasts**

# Acknowledgment of Country

The Brotherhood of St. Laurence acknowledges the Traditional Custodians of the lands and waterways on which our organisation operates. We pay our respects to Aboriginal and Torres Strait Islander Elders past and present.

## Our vision



## Our approach



# About the Brotherhood of St. Laurence



**Over 60 programs and services delivering support needed for people to thrive**



Early childhood and family support



Getting an education



Getting a job



Disability services



Saving and managing money



Aged care services

**A team working Australia-wide to be a strong voice for people experiencing disadvantage**



**1,500+**  
staff



**1,200+**  
volunteers



**89**  
locations

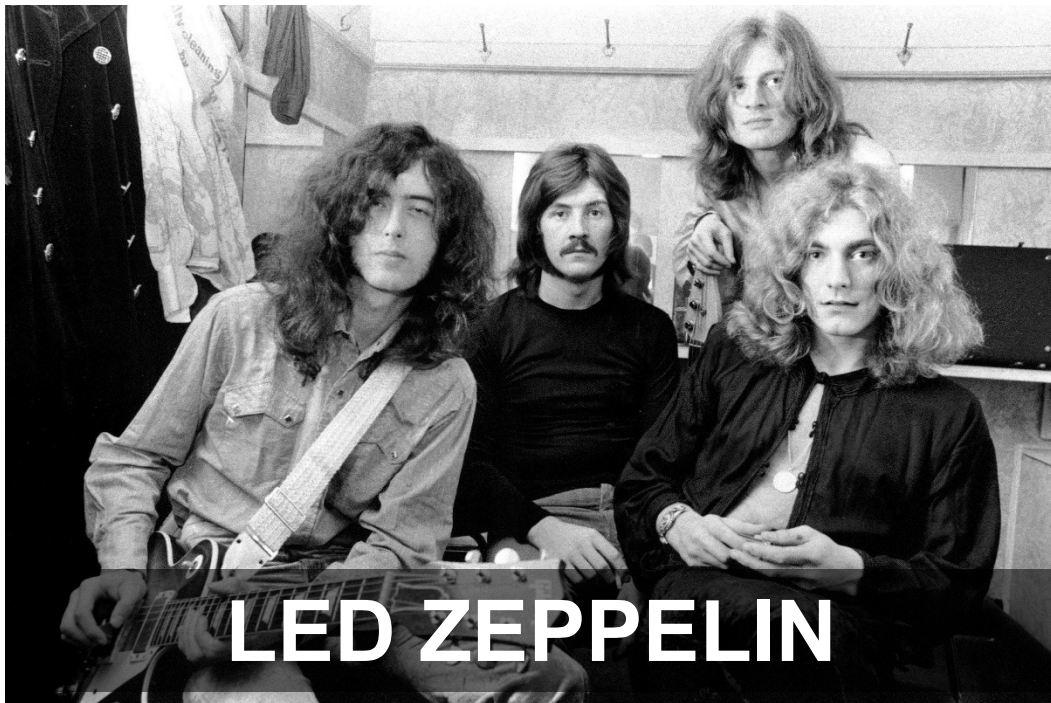


**163,000**  
people supported  
during FY19-22

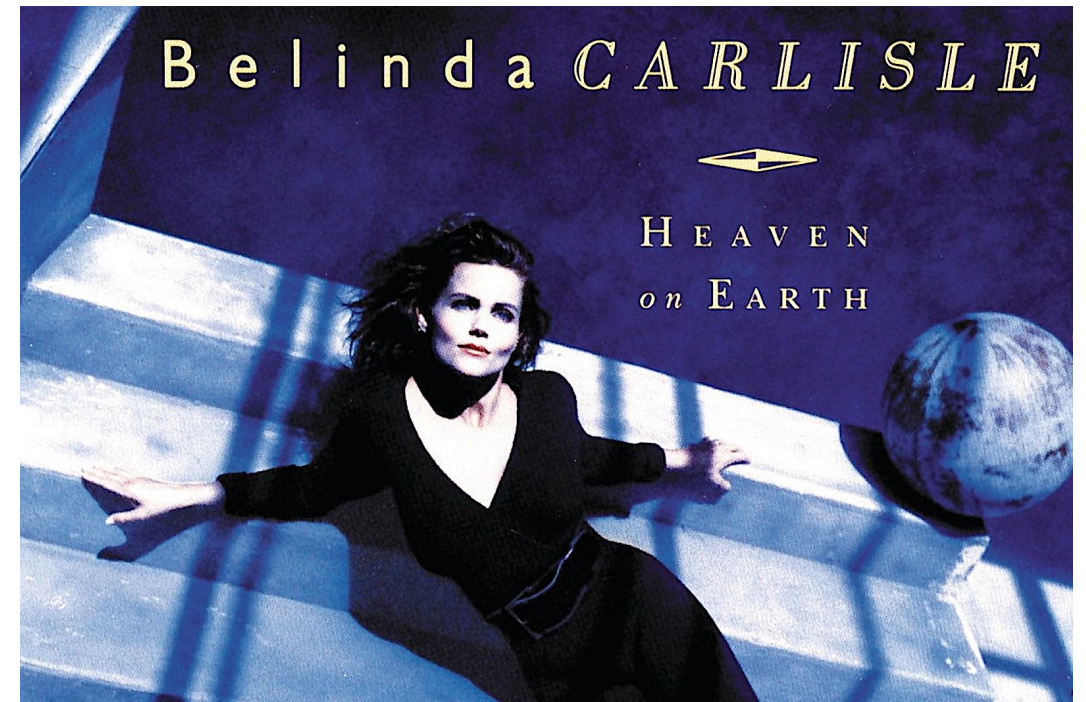
**One of Australia's largest social policy and research centres outside of government**

# Destination Unknown?

Stairway to  
Heaven...



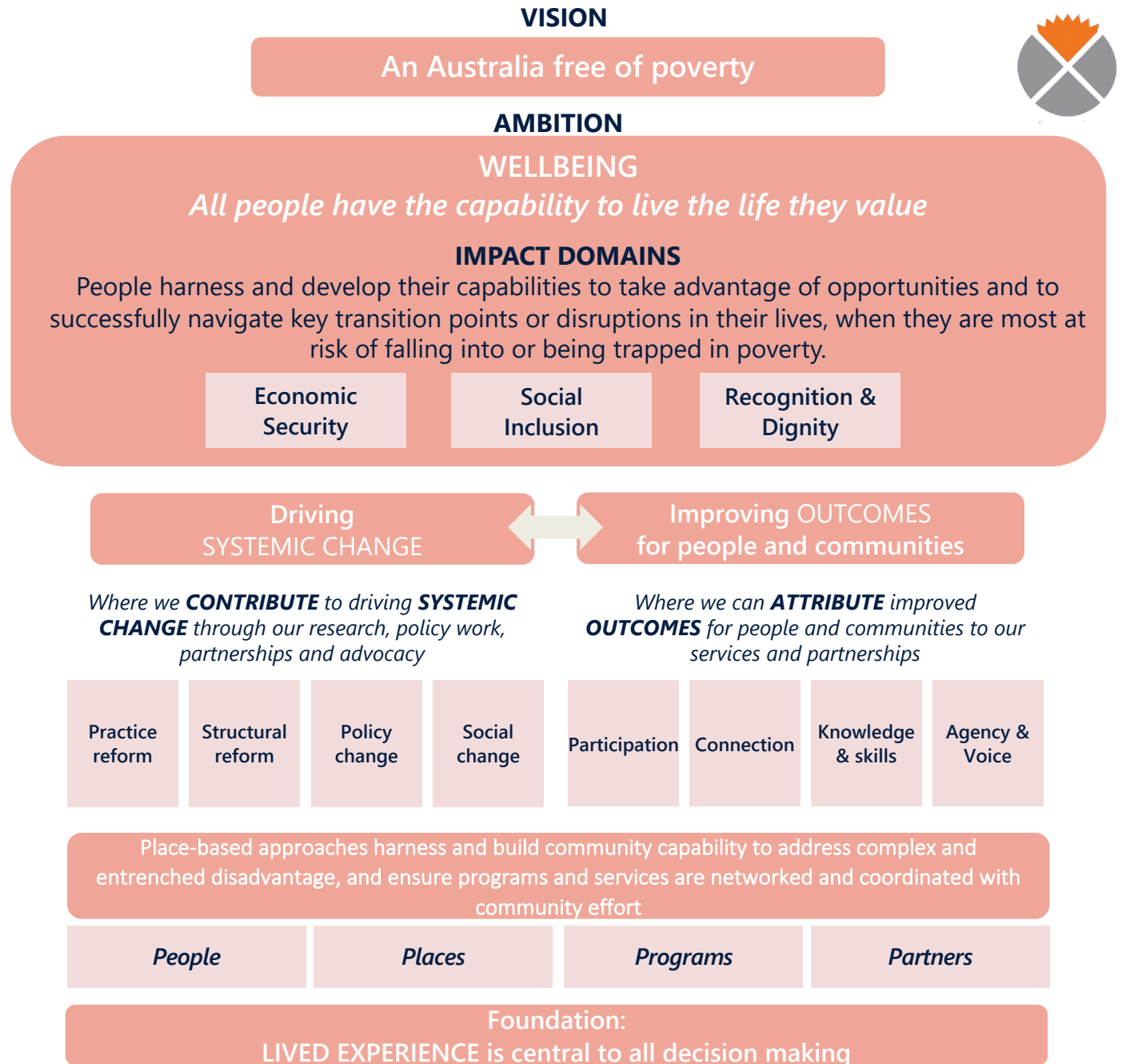
...or Heaven is a Place  
on Earth?



# The BSL Impact Framework: A wellbeing approach

The BSL Impact Framework articulates our **organisation-wide impact narrative** and our approach to monitoring and understanding progress towards our vision

It draws on the **Capabilities Approach** to understand poverty as the deprivation of **real opportunities** to do and be what **one values**, rather than solely focusing on the resources people can mobilise





# Our Monitoring, Evaluation and Learning **Guiding Principles** challenge us to promote and apply ethical monitoring and evaluation practices that expand the capability of our service participants and staff

---

## **1. Measure what matters.**

There is a clear rationale for all data that is collected. Measures focus on what people have reason to value, as well as service effectiveness.

## **2. Account for diversity.**

Our measures are sensitive to the unique attributes, abilities, and aspirations of individuals.

## **3. Put it in context.**

The circumstances individuals are situated within contextualise our findings and reveal the factors that enable or inhibit individual outcomes.

## **4. Understand how change occurs.**

Our monitoring is accompanied by an effort to understand how and why change has / has not occurred, in what circumstances, and for whom?'

## **5. Be transparent.**

We measure to evidence and improve our services, not legitimise them. We know what can be inferred from our data and ensure they're not distorted.

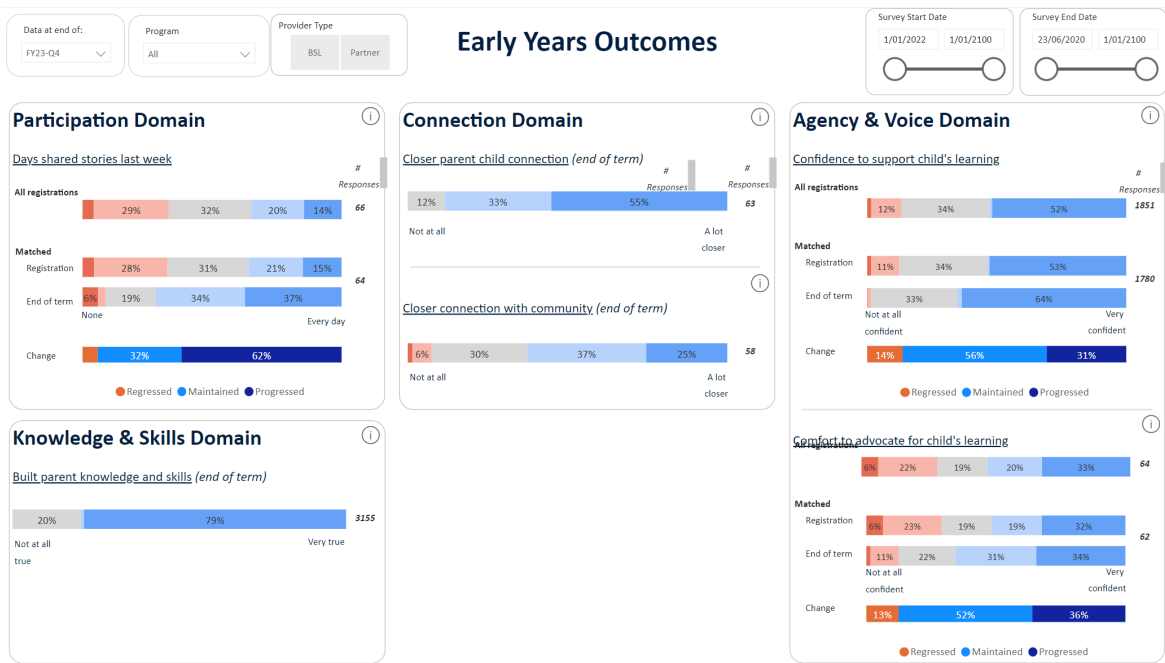
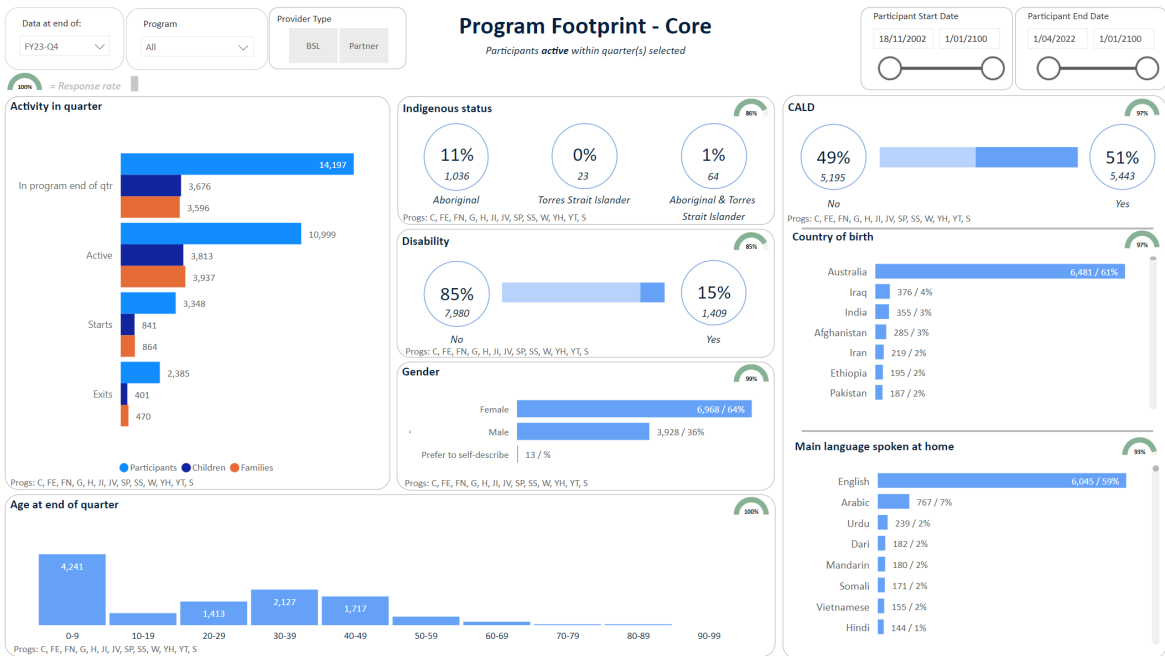
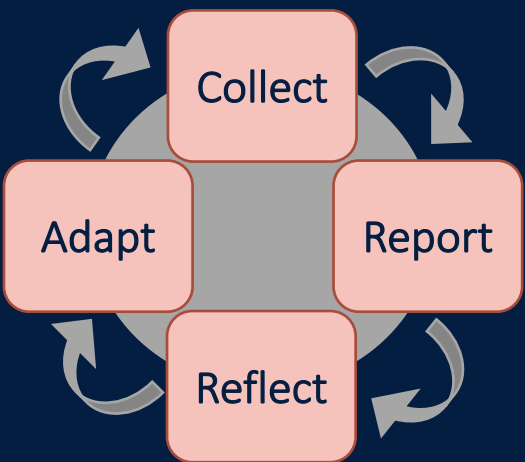
## **6. Include and empower.**

We seek the views and expertise of service users and relevant stakeholders to inform what we measure and how and guide our interpretation of findings.

## **7. Act through shared reflection.**

We engage in shared reflective practices to make sense of data, refine our understanding and drive concerted action.

# Regular participant outcomes monitoring to learn, reflect and adapt



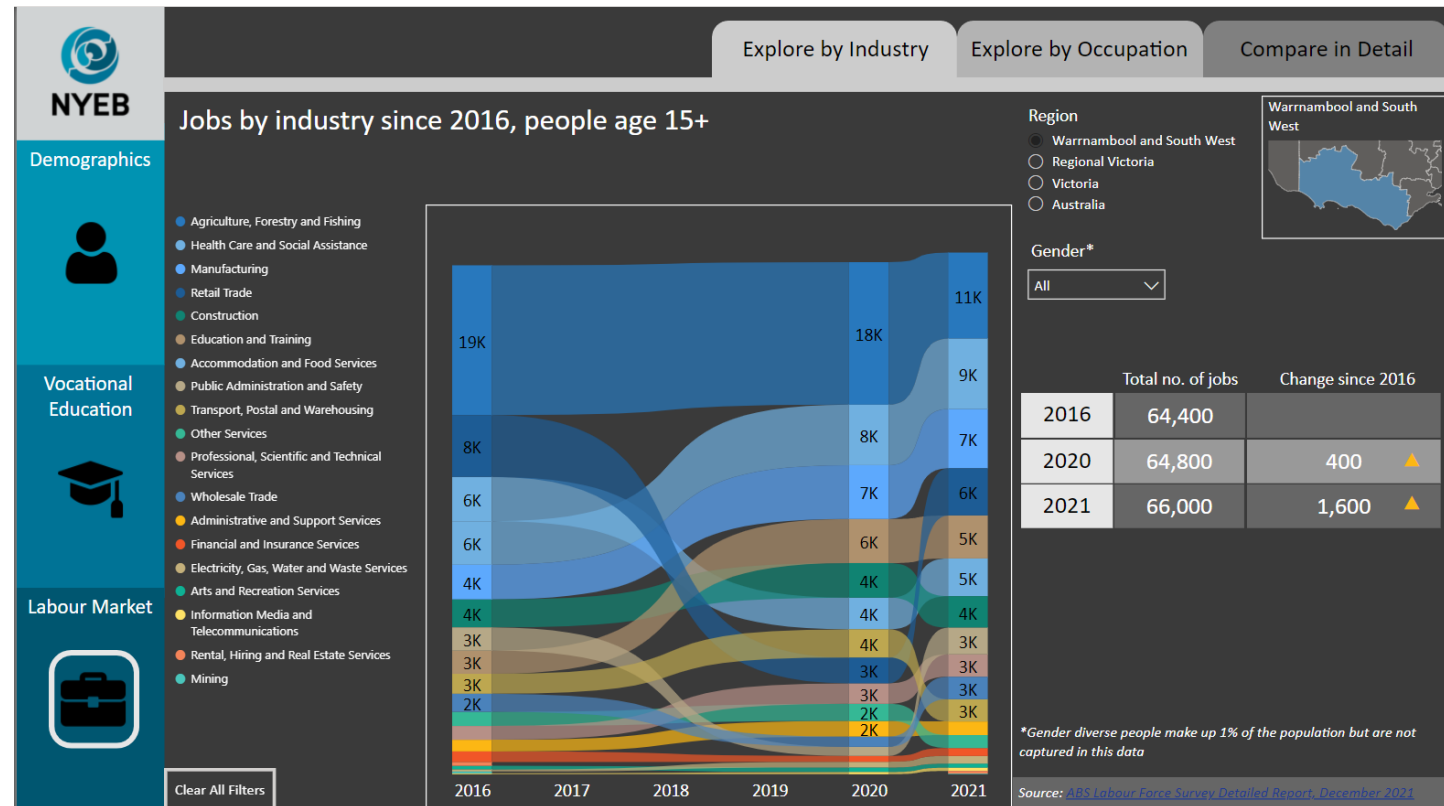
# Longitudinal research studies to understand patterns over time

e.g. Life Chances study



Place and cohort-specific **data tools** to enable and drive strategic action and innovation

e.g. Youth Opportunity Compass



# The ask: legislated measures for poverty reduction

---

“The Committee recommends Australia legislate measures on economic inclusion and poverty reduction and establish a multidimensional poverty index.

This should be done after the release of the Measuring What Matters statement and specify the process to agree targets and track progress, supported by a data, evidence and consultation strategy.”

*Interim Economic Inclusion Advisory Committee,  
May 2023*

# Lessons from NZ: Child Poverty Reduction Act (2018)



## Measures

- Low income before housing costs (below 50% of median income, moving line)
- Low income after housing costs (below 50% of median income, fixed line)
- A measure of material hardship
- A measure of poverty persistence (currently being developed)

+ 6 supplementary measures to allow further international comparison and monitor trends

## Targets

- 3-year & 10-year targets
- Overarching goal to halve child poverty and reduce it to 10% of children over 10 years (by 2028)

## Data

- Annual Household Economic Survey (Stats NZ)

## Progress

- On track.



# The blue sky destination

- **We measure what matters:**
  - Legislated measures for poverty reduction to define a clear national goal, and the data to support this (HILDA 2.0?)
  - A Capabilities Approach to measuring outcomes, including measures for agency and wellbeing
- **A culture of learning and engaging with data:**
  - Feedback loops use data to inform both practice and policy
  - People with lived experience contribute to sense-making
  - Genuine pursuit of data sovereignty





#### Inclusion, fairness and equity

##### Healthy

A society in which people feel well and are in good physical and mental health, can access services when they need, and have the information they require to take action to improve their health.

##### Secure

A society where people live peacefully, feel safe, have financial security and access to housing.

##### Sustainable

A society that sustainably uses natural and financial resources, protects and repairs the environment and builds resilience to combat challenges.

##### Cohesive

A society that supports connections with family, friends and the community, values diversity, promotes belonging and culture.

##### Prosperous

A society that has a dynamic, strong economy, invests in people's skills and education, and provides broad opportunities for employment and well-paid, secure jobs.

# The Youth Opportunity Compass

THE PROBLEM

TESTING A SOLUTION

LESSONS & OPPORTUNITIES

A need for evidence driven responses to youth unemployment, under-employment, insecurity and immobility in the labour market

Government data sources in their current form are not sufficient for robust, place based decision making

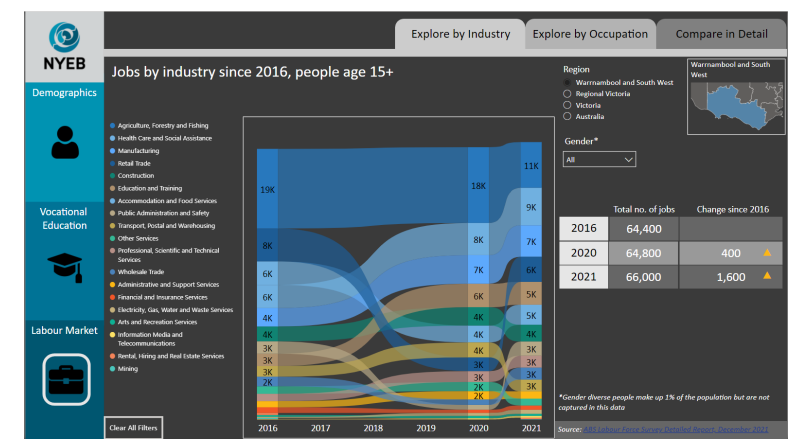
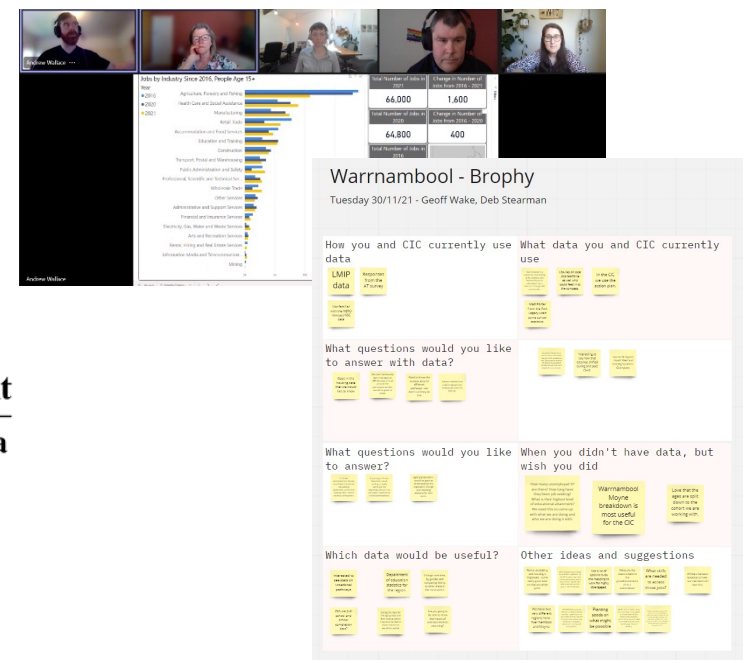
A transformable, place and cohort specific data-tool in an accessible and easy use to dashboard format

Co-design with local experts is a core component of our adaptive approach to building the Compass

Expertise held by community members can restore context to systemic data

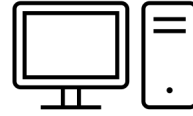
Expert data facilitation is needed to build data capability, literacy and ownership

Place and cohort specific data can enable and drive strategic action and innovation in youth employment



# Complex **evaluations** combining a variety of data sources

e.g. Developmental and  
outcomes evaluations  
of the Inclusive  
Pathways to  
Employment program



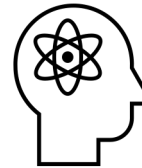
Program operational and  
activity data



Demographics and  
objective outcomes  
(e.g. employment status)



Comparison with  
published  
aggregate figures



Subjective and personal  
development outcomes



Qualitative interviews and  
focus groups



Sense-making workshops



